

# The Index

Georgia Department of Natural Resources  
Floodplain Management  
Office Newsletter

July 2012 | Volume 7  
[www.GeorgiaDFIRM.com](http://www.GeorgiaDFIRM.com)

## CONTENTS OF THIS ISSUE:

- ▶ Upper Chattahoochee River Basin Project Update
- ▶ Hurricane Season Is Here
- ▶ GA CRS User's Group
- ▶ First Discovery Meetings Held
- ▶ Georgia Coastal Mapping Project Update

## LINKS OF INTEREST:

- [www.GeorgiaDFIRM.com](http://www.GeorgiaDFIRM.com)
- [www.FloodSmart.gov](http://www.FloodSmart.gov)
- [www.fema.gov/hazard/flood](http://www.fema.gov/hazard/flood)
- <http://msc.fema.gov>

The Index is a publication of GA DNR Floodplain Management; for editorial comments or questions, please contact Tom Shillock at 404-675-1607, or write to [tom.shillock@dnr.state.ga.us](mailto:tom.shillock@dnr.state.ga.us). If you would like to join the mailing list, please contact Garrett Skinner at [Garrett.Skinner@atkinsglobal.com](mailto:Garrett.Skinner@atkinsglobal.com).

### Hurricane Season Started June 1. Are Your Citizens Prepared?

As Georgia and other states know, hurricanes and tropical storms are not just a coastal event. While over the years, tropical storms and hurricanes have run up the coast, they have also come inland from the east and overland from the south and the west.

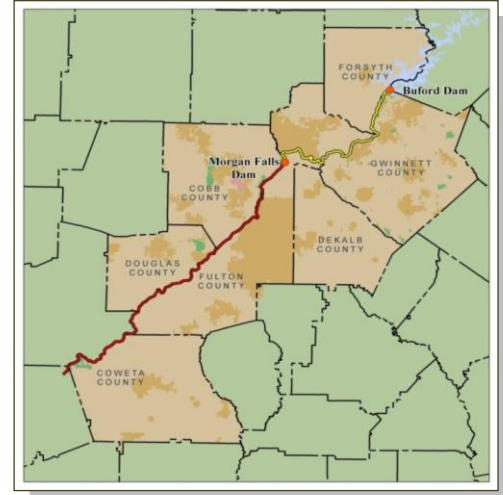
Now is the time to review your plans for hurricane season and to alert your citizens to do the same. For more information on helping your citizens prepare, visit [www.Ready.gov](http://www.Ready.gov). And remember that it typically takes 30 days for a flood insurance policy to take effect, so encourage them to review their coverage needs with an insurance agent now BEFORE the next one starts brewing! For more information on flood insurance, visit [FloodSmart.gov](http://FloodSmart.gov).



## Upper Chattahoochee River Basin Project

### Post-Preliminary Update

Many counties within the UCRB project are nearing completion. Appeal periods have concluded for Cobb, Coweta, Douglas, Forsyth, and Gwinnett Counties. The appeal period schedule for DeKalb and Fulton Counties are provided in Table 1 below. Over 50 meetings were held within the project area following the issuance of the Preliminary Maps. Thanks to all of the communities for helping locate facilities and participating in these meetings. As a result of strong local outreach support, the appeal period process went very smoothly and we are able to move forward with finalizing the flood studies. Planned Effective Dates for all counties in the project area are listed in Table 2 below.



After the regulatory FIRMs and FIS report are finalized, the focus of this project will transition towards planning for mitigation and promoting risk awareness. As part of this phase of the project, Resiliency Workshops will be held for each County. Local floodplain administrators will be contacted around the Letter of Final Determination (LFD) timeframe (see Table 2 below) to start planning efforts for this workshop. More information about this phase of the project is forthcoming.

**Table 1. Remaining 90-Day Appeal Period Dates**

County	2nd Newspaper Notice	Appeal Period
DeKalb County	May 17, 2012	May 17 – August 15, 2012
Fulton County	May 18, 2012	May 18 – August 16, 2012

**Table 2. Letter of Final Determination (LFD) & Effective Dates\***

County	LFD	Effective Date
Cobb County	September 4, 2012	March 4, 2013
Coweta County	August 6, 2012	February 6, 2013
DeKalb County	November 16, 2012	May 16, 2013
Douglas County	September 4, 2012	March 4, 2013
Forsyth County	September 4, 2012	March 4, 2013
Fulton County	November 16, 2012	May 16, 2013
Gwinnett County	September 4, 2012	March 4, 2013

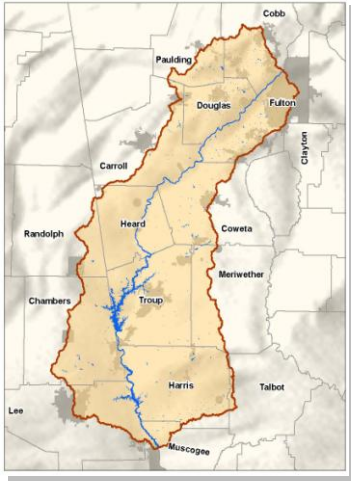
\*Dates are projected and are subject to change.

**Georgia Community Rating System (CRS) User's Group** first meeting was held on May 8<sup>th</sup>. Six communities participated along with one private firm in an informal, round table discussion around what neighboring communities are doing in the CRS Program and the challenges they face. Suggestions were made from other communities who have dealt with similar issues and how they had met those challenges. The Program's credit restructuring was also discussed.

The CRS User's Group continues to grow and other Georgia communities are encouraged to join. It has been reported that communities have improved their CRS rating a full class just by better understanding the ways they can improve their local program using knowledge gained at these meetings.

**The next meeting is being hosted by the City of Roswell on August 9 at 1:00 pm.** If you are interested or would like more information about the User's Group, contact Jeff Stanley (City of Griffin's CRS Coordinator/Floodplain Manager at [jstanley@cityofgriffin.com](mailto:jstanley@cityofgriffin.com)).

## GEORGIA DNR HOLDS FIRST DISCOVERY MEETINGS FOR THREE WATERSHEDS



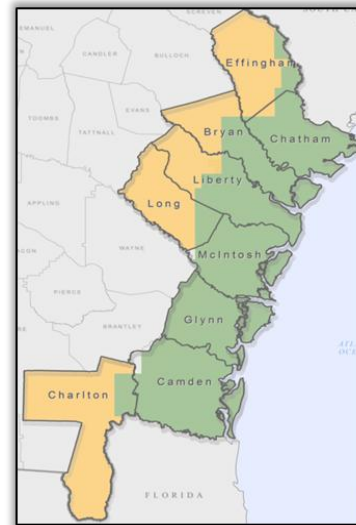
This past spring, in partnership with FEMA, the GA DNR conducted the Discovery Process for communities within the Middle Chattahoochee, Upper Ocmulgee, Middle Savannah and Upper Savannah Watersheds. This process began with online surveys to obtain basic needs documentation from communities followed by one-on-one telephone interviews to determine the detailed mapping needs of the community as well as mitigation efforts in place. After information was obtained from communities, as well as GA DNR, FEMA and GEMA, watershed-wide Discovery Meetings were held to further explain this new initiative to stakeholders while encouraging intercommunity dialogue and mitigation planning. Communities shared information with one another about capital improvement projects within the watershed as well as major mitigation projects (both ongoing and planned) in addition to major flooding and mapping issues. Community participants included emergency managers, planners, engineers, zoning administrators, permitting officials, among other technical staff. Final Discovery Reports will be delivered to participating communities in the fall.

Much like the previous scoping process, the new discovery process will allow GA DNR and FEMA to determine prioritization when planning flood study production in the future. In addition, this process now promotes more awareness and collaboration among communities within their respective watersheds. GA DNR hopes that as the Georgia Flood M.A.P. continues to evolve, so will the relationships and overall awareness of flood risk.

## GEORGIA COASTAL COUNTIES MAPPING PROJECT UPDATE

The Inland Phase of the Georgia Coastal Counties Mapping Project (CCMP) includes portions of Effingham, Chatham, Bryan, Liberty, Long, and Charlton Counties (areas on map shown as orange) and consists primarily of riverine flood study updates. The Inland Phase of the project is the first area to be revised within these communities while coastal analysis is still being conducted. To prepare for preliminary issuance for this phase of the project, GA DNR in coordination with each County's Floodplain Administrator will be hosting Draft Map Review Meetings. The Draft Map Review Meeting has been added to the Georgia Flood M.A.P. Program providing stakeholders with the opportunity to review and comment on the draft engineering results in advance of FEMA's Preliminary Issuance of the Flood Insurance Rate Maps (FIRM) and Flood Insurance Study (FIS) Report.

Letters of invitation are being sent to each of the communities' chief elected officials and floodplain administrators within the CCMP study area. Meeting information is provided below and will also be available on our website, [www.GeorgiaDFIRM.com](http://www.GeorgiaDFIRM.com).



### **Draft Work Map Meetings**

#### ***Charlton County***

*Date: July 11, 2012*

*Time: 10:30am - 12:00pm*

*Where: Charlton County Annex*

#### ***Effingham, Chatham, Bryan, Liberty, & Long Counties***

*Date: July 12, 2012*

*Time: 10:00am - 11:30 am*

*Where: Savannah Civic Center*

Work maps presenting the draft floodplain boundaries will be sent to the Floodplain Administrator/CEO in advance of their respective Draft Work Map meeting. The work maps will show the flood risk as portrayed on the effective FIRMs for your community overlaid with the draft floodplains reflecting your communities current flood risk. The comparison between the effective and revised floodplains will help you easily identify where major changes may be occurring and where additional outreach to your constituents may be needed. In addition to the work maps, a new digital product showing the changes since last FIRM will be available on the GA DNR website.